



## End of Terrace Warehouse Lease Assignment

### Unit F4

Star Road, Partidge Green, RH13 8RA

Industrial / Warehouse

# TO LET

**3,900 sq ft**

(362.32 sq m)

- Lease Assignment
- End of terrace
- Popular Star Road Industrial Estate
- Steel loading door
- 6 car spaces

# Unit F4, Star Road, Partidge Green, RH13 8RA

## Summary

Available Size	3,900 sq ft
Rent	£29,250 per annum
Rateable Value	£26,250
Legal Fees	Each party to bear their own costs
EPC Rating	Upon enquiry

## Description

End of terrace warehouse on a steel portal frame.

Features include:

- \* Steel loading door
- \* Lighting
- \* Male/Female toilet
- \* 6 car spaces

## Accommodation

The accommodation comprises the following areas:

Description	sq ft	sq m
Ground Floor	3,900	362.32
<b>Total</b>	<b>3,900</b>	<b>362.32</b>

## Location

The building is situated on the popular Star Road Industrial Estate, 3 miles from the A24 and 8 miles from Horsham.

## Lease

A new sub-lease is available from April 2022 for a term of 5 years on a full repairing and insuring basis outside the provisions of the Landlord & Tenant Act 1954. The sub-lease is available by assignment at nil premium.



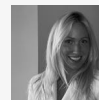
## Viewing & Further Information



**James Haywood**  
01273 321 123  
jbh@gsp.uk.com



**Erin Mann**  
01273 321 123  
em@gsp.uk.com



**Chelsea Adams**  
01273 267 226  
CA@gsp.uk.com